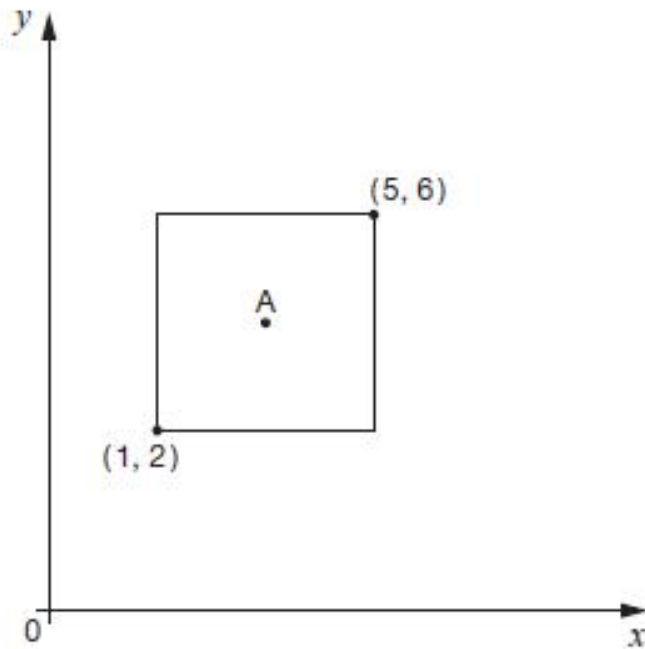


L6 Booster Coordinates

Name: _____

Date: _____

18. Look at the square drawn on the graph.



Not drawn accurately

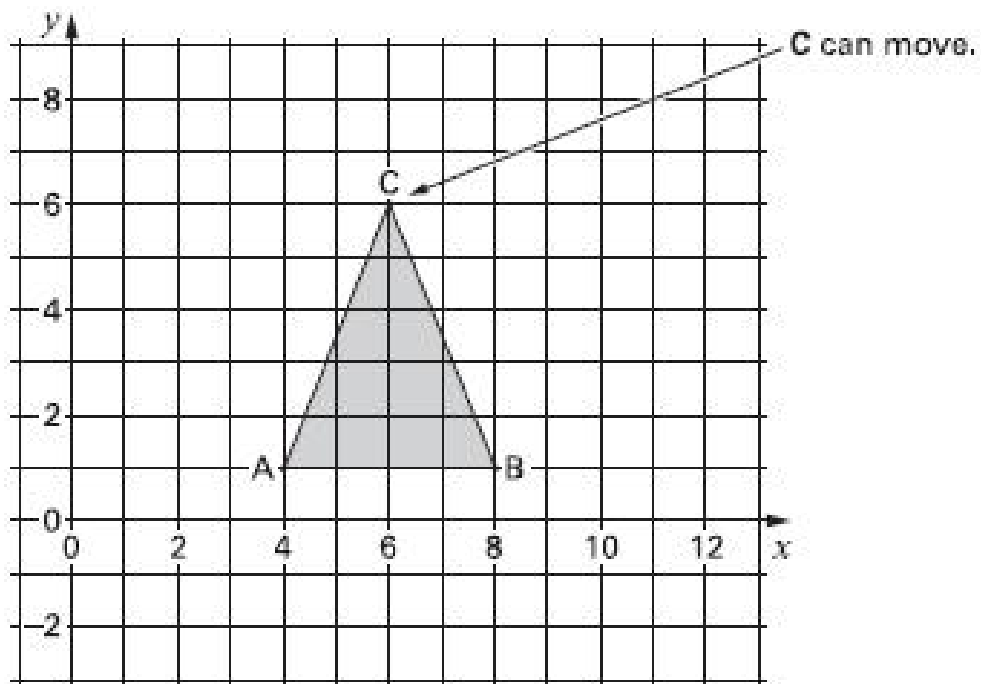
Point A is the centre of the square.

What are the coordinates of point A?



A is (_____ , _____)

12. On this square grid, **A** and **B** must not move.



When C is at (6, 6), triangle ABC is **isosceles**.

- (a) C moves so that triangle ABC is still **isosceles**.

Where could C have moved to?

Write the coordinates of its new position.

(.....,.....)

.....
1 mark

- (b) Then C moves so that triangle ABC is **isosceles and right-angled**.

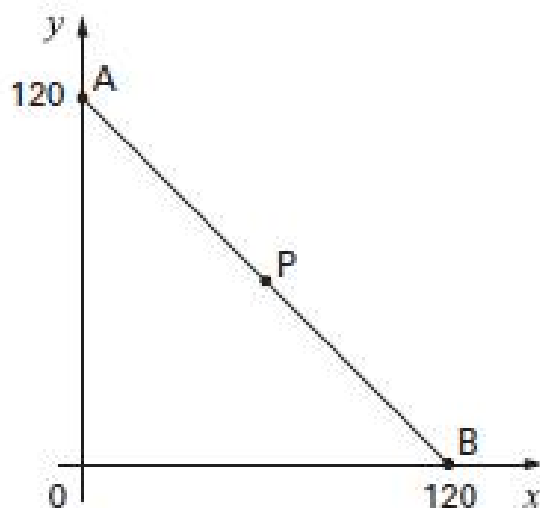
Where could C have moved to?

Write the coordinates of its new position.

(.....,.....)

.....
1 mark

16. (a) P is the **midpoint** of line AB .



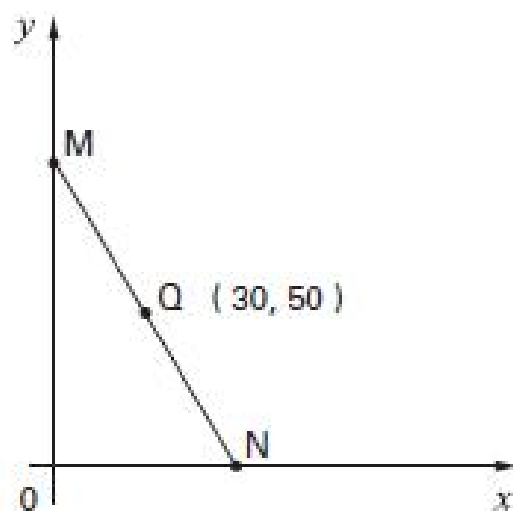
What are the coordinates of point P ?

 P is (.....,

.....
1 mark

(b) Q is the **midpoint** of line MN .

The coordinates of Q are $(30, 50)$



What are the coordinates of points M and N ?

 M is (.....,

.....
1 mark

N is (.....,

.....
1 mark