

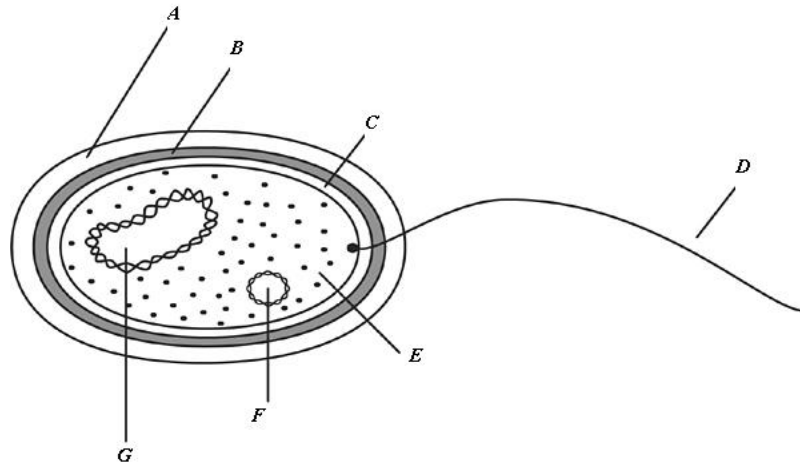
# SCIENCE PRACTICE EXAM - MCQ (Key Stage - 3) - Feb 2008

**Time: 1 hour**

**Marks:**

**Student Name:** \_\_\_\_\_

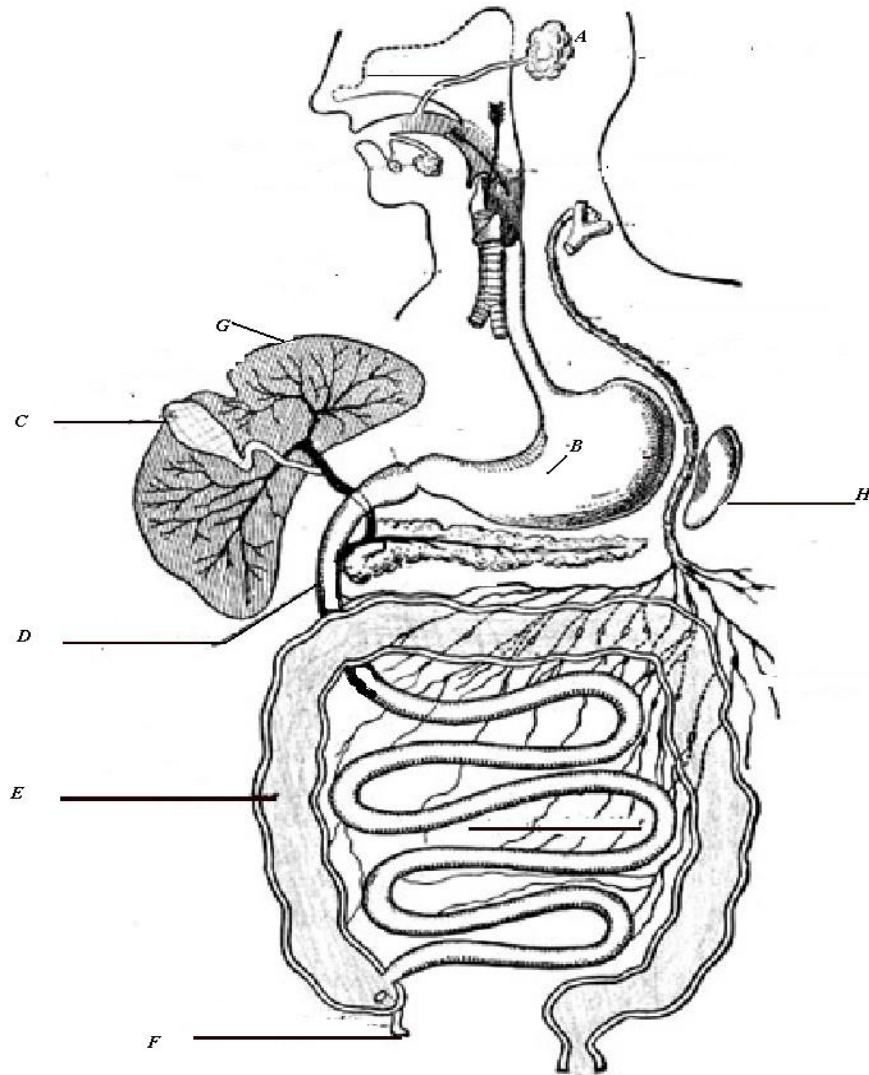
(Answers should be marked by pencil first then pen. Calculator is not allowed)



(Source: net; modified by master)

(Use the above diagram to answer Qu.1 to 5)

1. What kind of cell is shown in the above diagram?  
a. Virus      b. Plant cell      c. Bacterial cell      d. Sperm Cell
2. What function is part G mainly doing?  
a. Engulfing    b. Carrying genetic information    c. enzyme activity.    d. Not known
3. What is the main function of Part D?  
a. Protection      b. Photosynthesis      c. Movement      d. finding egg
4. Part C is a structure of the above cell, which is called as;  
a. Cell wall      b. Cell membrane      c. Vacuole      d. Cytoplasm
5. Sathu gives a statement "The above cell may show variation from generation to generation" because it has,  
a. Cytoplasm      b. Cell membrane      c. Chromosome      d. Genetic material



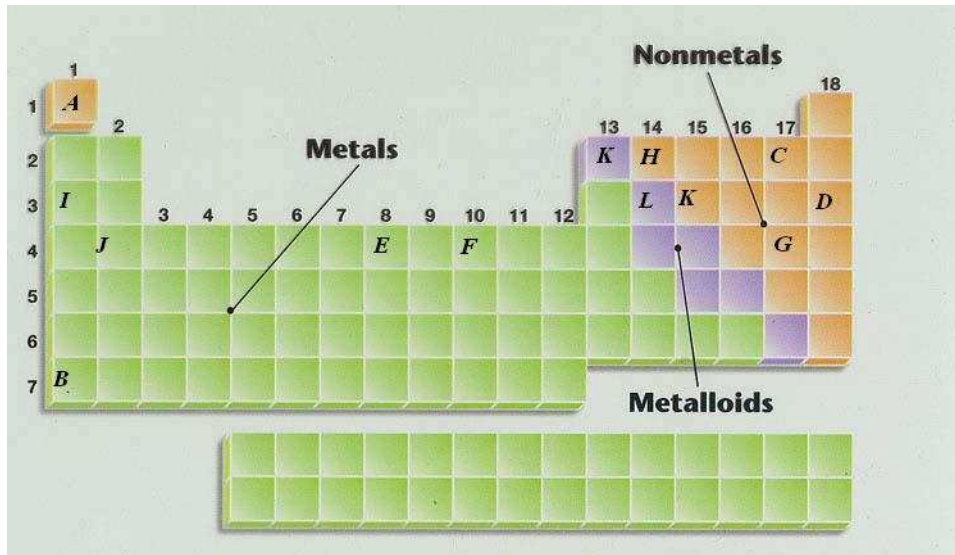
© Belinda J Mooney & Licensors  
(Modified by Master)

*(Use the above diagram showing human alimentary canal to answer Qu.6 to 10)*

6. What is the name of the enzyme in saliva, which is secreted by salivary gland (A)?  
a. Carbohydrase      b. Protease      c. Lipase      d. Amylase
7. What is the function of secretion released by part C in the alimentary canal?  
a. Emulsifying fat      b. Secreting enzymes      c. Storing water      d. Catalyst
8. In which part of the alimentary canal, water is absorbed?  
a. B      b. E      c. F      d. H
9. Which part of alimentary canal has villi involving in nutrient absorption in the body?  
a. E      b. F      c. G      d. D

10. The name of the organ labelled with the letter **H** is,

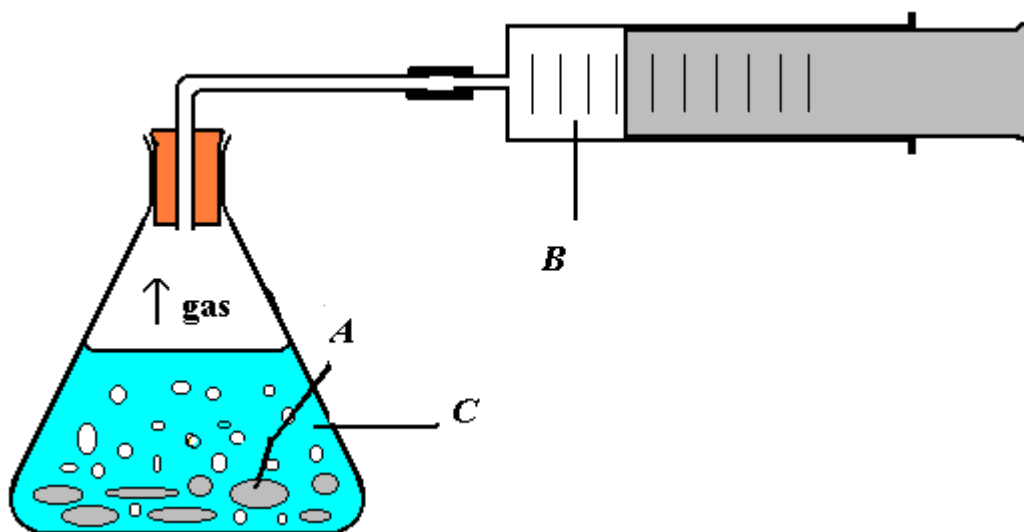
- a. Kidney      b. Spleen      c. Heart      d. Pancreas



(Source: net; modified by master)

[Use the above periodic table (signs used in not originally labelled as in original periodic table) to answer Qu.11 to 15]

11. Which letter is representing the most reactive metal in the above periodic table?  
 a. I      b. F      c. J      d. B
12. Which element is the most reactive non-metal in the above periodic table?  
 a. A      b. G      c. C      d. H
13. Pick the correct series from followings, which is representing some metals in original reactivity series?  
 a. I, J, H    b. J, E, H    c. I, A, J    d. I, J, E
14. If element "H" reacts with enough oxygen, what might the product be?  
 a. H<sub>2</sub>O    b. HO<sub>2</sub>    c. OH    d. HO
15. The element L is involving in making sand thus the chemical symbol of L is,  
 a. Li      b. C      c. Si      d. O

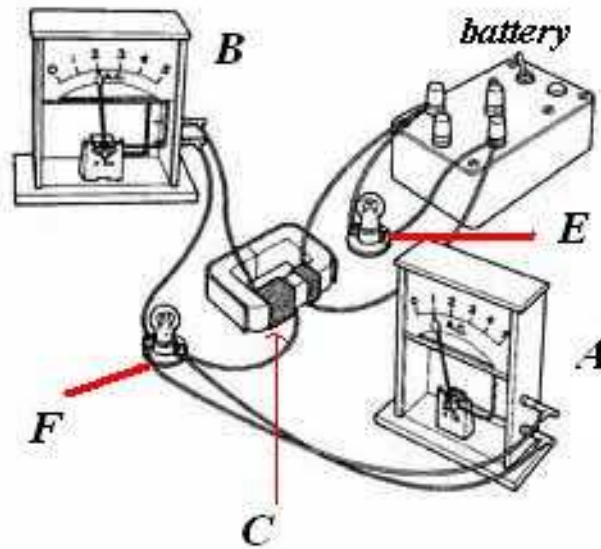


(Source: net; modified by master)

(Use this diagram to answer Qu.16 to 18)

*Sajee* designed an experiment in order to perform acid- metal reaction in school laboratory. He added metal **A** with strong acid **C** and allowed the reaction starts. After a while the syringe connected to reaction mixture, started to fill with gas **B**.

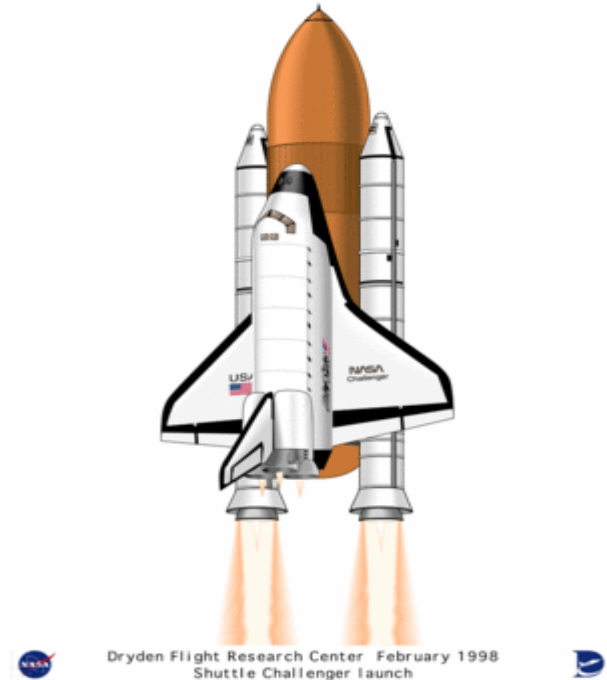
16. What is the chemical symbol of the gas released in this reaction?
- a.  $H_2O$       b. He      c.  $CO_2$       d.  $H_2$
17. Which strong acid might be used by *Sajee* in this experiment?
- a. NaOH      b. KOH      c.  $CH_4$       d.  $HNO_3$
18. The metal **A** used in the experiment might be one of the followings, it could be,
- a. Cu      b. Ag      c. Zn      d. Hg
19. When a hydrocarbon (e.g.  $CH_4$ ) compound reacts with enough oxygen, what are the products forming?
- a.  $CO_2, H_2$       b. CO,  $H_2O$       c.  $H_2, CO_2$       d.  $H_2O, CO_2$
20. Granite is one of the materials used in building process. Granite is a/an/both;
- a. Sedimentary rock      b. Igneous rock      c. Metamorphic rock      d. a and c



(Source: net; modified by master)

(Use the above diagram to answer Qu.21 to 25)

21. Which letter does show voltmeter connected parallel to the circuit?
- a. E      b. B      c. C      d. A
22. Which bulb/s is connected parallel to the circuit?
- a. E      b. F      c. Both      d. None of them
23. What kind of magnet will form at component C when the circuit will be closed?
- a. Bar magnet      b. Earth magnet      c. Electro magnet      d. None of them
24. Which meter/s has ability to read the amount of current in the circuit?
- a. B      b. A      c. a and b      d. None of them
25. Pick correct pair of metals, which might be used in component C?
- a. Fe and Na      b. Ag and Au      c. Fe and Cu      d. Cu and K



*(Use the above diagram to answer Qu.26 to 28)*

The above diagram shows NASA's space shuttle at launch. Fluid oxygen and hydrogen are mainly used as fuel on its launch.

**26.** What kind of the energy changes will happen while launching shuttle to space?

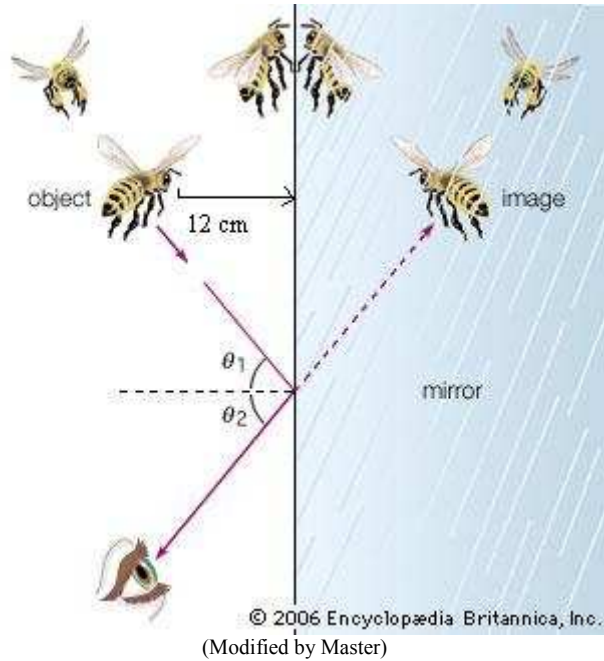
- a.** Chemical to Sound   **b.** Chemical to kinetic   **c.** Chemical to heat   **d.** All of them

**27.** Why is the space shuttle designed in streamlined shape?

- a.** To reduce weight                      **b.** To reduce friction                      **c.** To reduce air resistance  
**d.** b and c

**28.** Mass of Space shuttle is nearly 2 million kg (2m kg), what is the weight of the shuttle in earth?

- a.** 2m kg    **b.** 2m N    **c.** 0.2m N    **d.** 20m N



*(Use the above diagram to answer Qu.29 and 30)*

**29.** If incident light angle is  $60^\circ$  in the above diagram then find out reflected light angle?

- a.  $120^\circ$       b.  $30^\circ$       c.  $60^\circ$       d. None of them

**30.** What is the distance of the image from smooth surface of mirror?

- a. 12 cm      b. 24 cm      c. 6 cm      d. Can't be told

---

***End of this exam***

---

**Student's Comment:** -----

**Master's Comment:** -----

**Parent Signature:** -----

*(Your Marks will appear on Master's Web Eagle with Your Short Code)*

*[Charge for the Photocopy (Black and White):  $7 \times 5 + 15 = 50$  p (Charges only applicable for students who request master to bring copy of this exam paper to them)]*